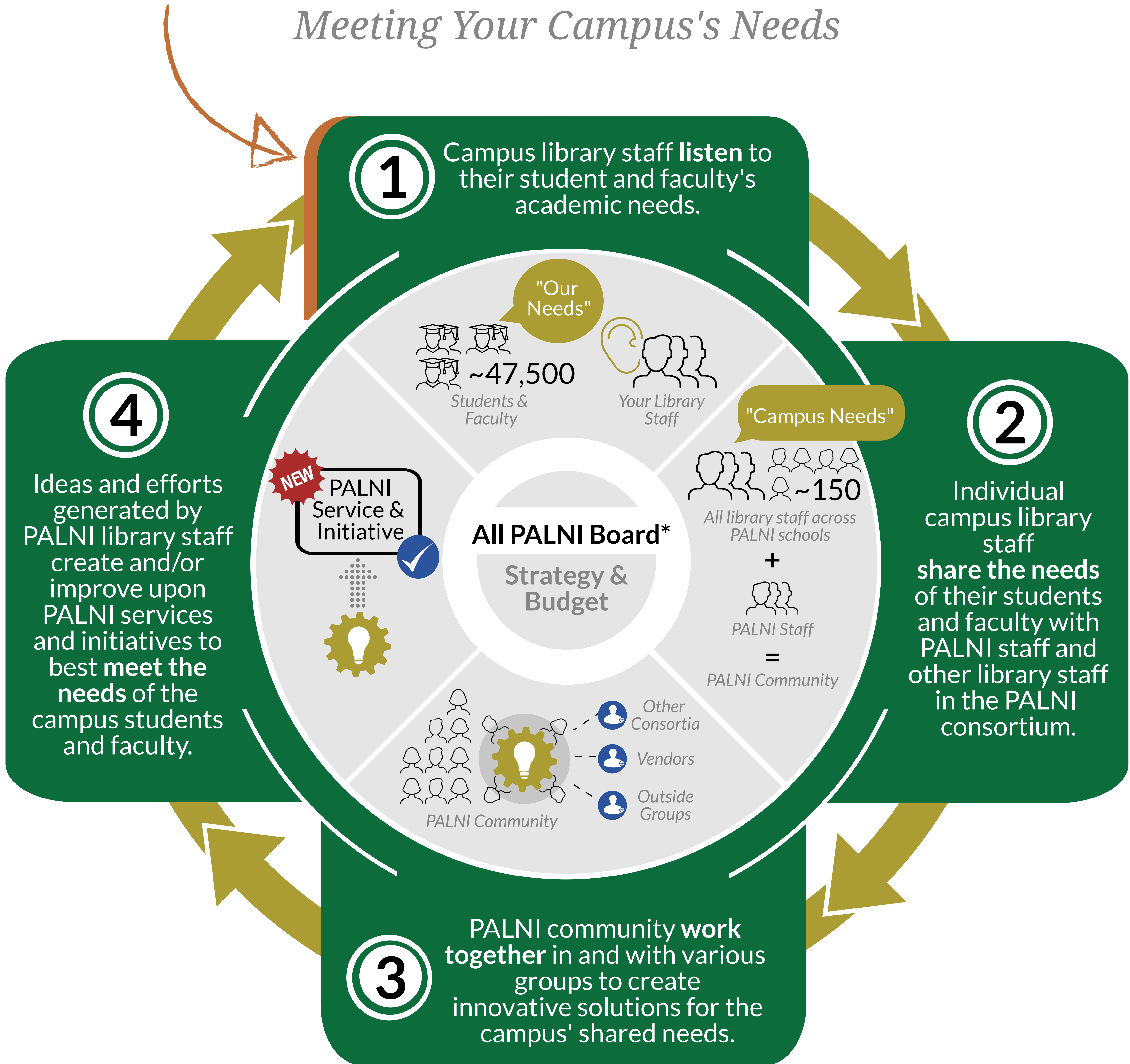


# How We Develop PALNI Strategic Services

*Meeting Your Campus's Needs*



**PALNI is focused on cost containment and savings which is illustrated in the 2020-2023 Strategic Framework**

See more:

"PALNI Statement on Supported Institution Financial Challenges" - <http://www.palni.org/statement-on-financial-challenges/>

PALNI 2020-2023 Strategic Framework - <http://www.palni.org/strategic-framework/>

Collective student and faculty number based on IPEDS data pulled March 2020